



See Beyond, LG Transparent OLED Signage

55EW5F-A

* All images used are for illustrative purposes only.

A New Level of See-through View

Imagination becomes reality

LG Transparent OLED signage illuminates spaces that once were hidden away behind the display, completely harmonizing with its surroundings.

Boasting vivid and clear colors with high transparency, this display provides valuable information about as well as visual enhancements to objects placed behind it, giving viewers an impressive “wow” factor.



FULL OF LIFE

Unrivalled Picture Quality



LG's OLED technology, featuring self-lighting pixels, maintains accurate and vivid colors even when the display becomes transparent. It brings content to life, making it difficult for people to separate content from the real objects placed behind the screen. Only when viewed from a side angle is the content readily distinguishable from the actual object. Also noteworthy, LG Transparent OLED signage delivers awe-inspiring picture quality in all parts of the screen, even from wide viewing angles.

SPACIAL HARMONY

High Transparency

Thanks to its high transparency (38%), much higher than conventional LCD transparent displays, LG Transparent OLED signage blends into its surroundings seamlessly and naturally. The display's see-through view turns places where it is installed into open and interactive spaces.



King Suite

As soon as you enter the room, open spaces, high floors and a wide window of natural lighting make the room more spacious. Sufficient storage space is ideal for travelers, and it is located on a high floor, giving them the freedom to enjoy the spectacular night view of the city.

ROOM SIZE
128 m² (barrister 60 m²)

BED OPTION
One king bed

VIEW
City

OCCUPANCY
3 adults or 2 adults and 2 children

BATHROOM
One full marble bathroom plus guest powder room

SERVICES
Including the use of a gym, swimming pool in the fitness club.

Food and Beverage Promotion

The Lounge features a unique menu and premium has designed by a food consultant from a world-class Michelin restaurant.

SPACIAL HARMONY

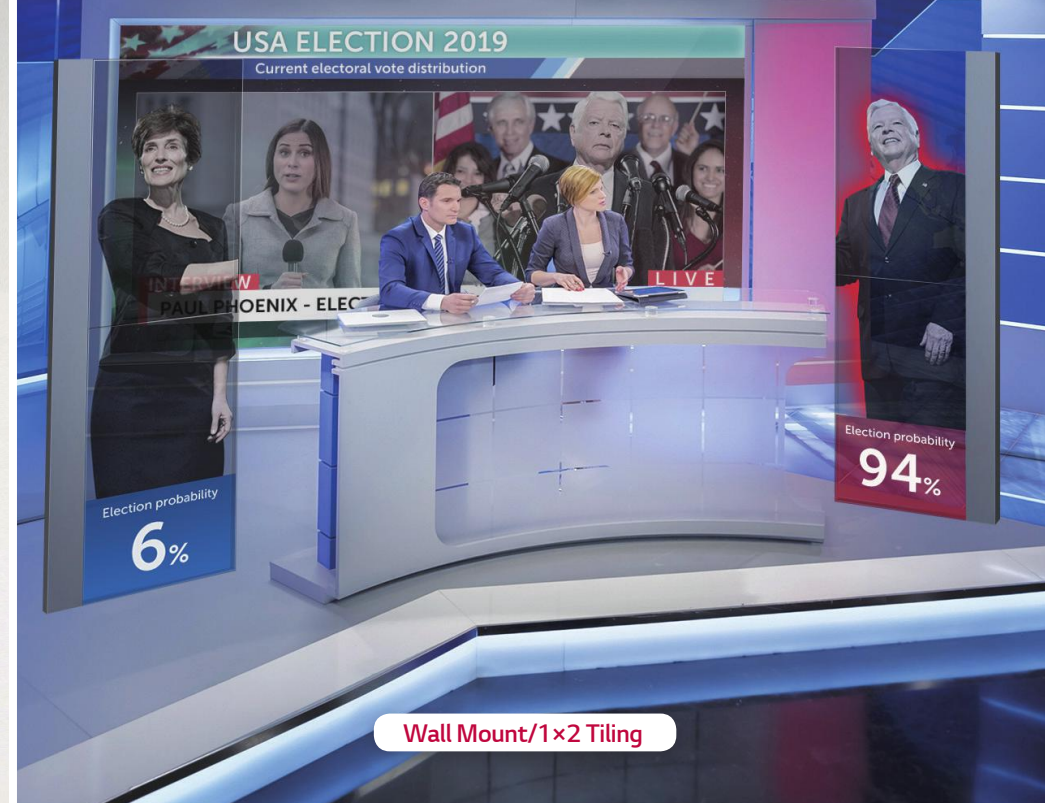
Customizable and Expandable Design



LG Transparent OLED signage is designed as a semi-assembled display, meaning you can install it in various ways to fit into existing structures and spaces. The single stand-alone* type is available, as well as ceiling and wall-mount types*. Displays can be also tiled* together to make a immersive screen, enabling installation on large show-windows. There is no limit to the applications of Transparent OLED signage, and it can complement and enhance any venue in which it is installed.

* Installation accessories are not supplied by LG.

Ceiling/Single



Wall Mount/1x2 Tiling



2x2 Tiling

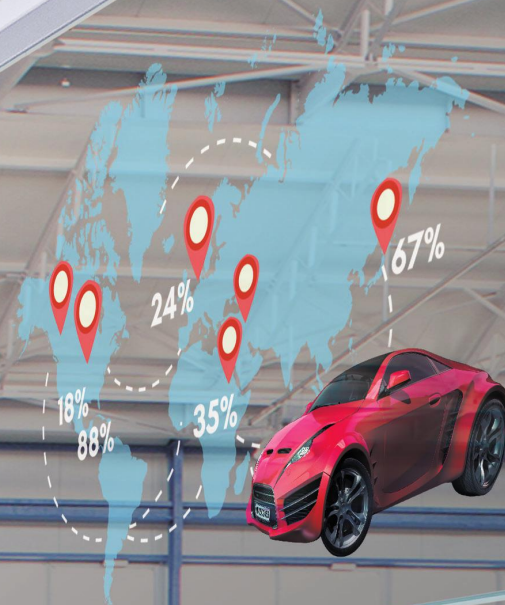
SEE THROUGH

Effective Information Delivery

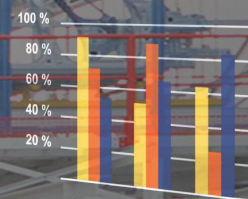
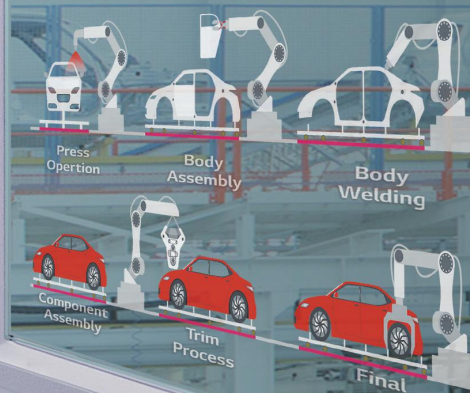
When people observe an object, having supplemental information can help provide a richer understanding. In this case, LG Transparent OLED signage is the optimal solution. While clearly showing objects behind the screen, it overlays information right over them so that viewers can easily see both the object and the relevant information without having to change their view.



Status of Export



Automobile Production Process



VISUAL FEAST

AR Effects in the Dark

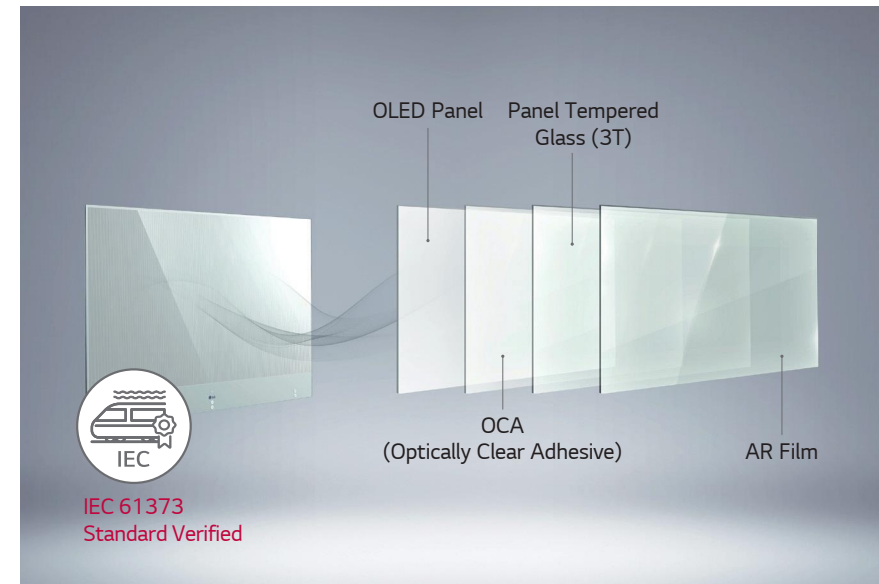
Using LG Transparent OLED signage, you can surprise viewers with AR effects in the dark. The content displayed seems life-like, adding another “wow” factor to the viewing experience.



PRODUCT DURABILITY

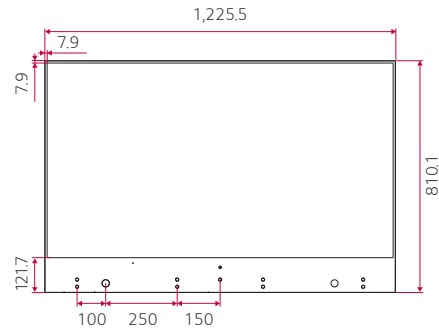
Robust Design for Safety

The tempered front glass protects the screen from external impact, and its verified safety design means it is reliable enough to endure shock and vibration caused by the surrounding environment, such as moving trains.

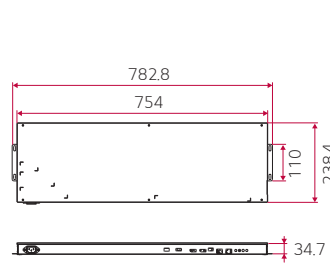


Dimension (unit: mm)

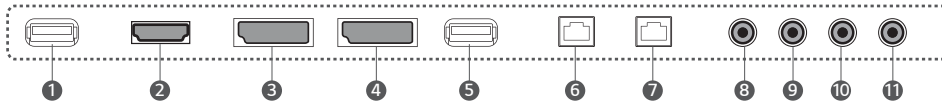
Head



Signage Box



Connectivity



- 1 USB 2.0
- 2 HDMI IN
- 3 DP IN
- 4 DP OUT
- 5 USB 2.0
- 6 LAN IN
- 7 LAN OUT
- 8 IR IN
- 9 RS232C IN
- 10 RS232C OUT
- 11 AUDIO OUT



Specifications

55EW5F-A

PANEL	Screen Size	55"
	Panel Technology	OLED
	Aspect Ratio	16 : 9
	Native Resolution	1,920 x 1,080 (FHD)
	Brightness (Typ.) ¹⁾	400/150 cd/m ² (Average Picture Level 25%/100%, without Glass)
	Transparency (Typ.)	38% (Panel)
	Viewing Angle (H x V)	178 x 178
	Response Time	1 ms (G to G)
	Surface Treatment (Haze)	Hard Coating (2H), Anti-reflection Treatment of the Front Polarizer (Reflectance Typ. 14%)
	Life Time (Typ.)	30,000 Hrs
CONNECTIVITY	Operation Hours	18 Hrs / 7 days *Moving Video Only
	Orientation	Landscape & Portrait
	Input	HDMI, DP, USB (2)
MECHANICAL SPECIFICATION	Output	DP, Audio
	External Control	RS232C In/out, RJ45 (LAN) In/out, IR In
	Bezel Color	Silver (Mirror)
	Bezel Width	7.9 / 7.9 / 7.9 / 121.7 mm (T/L/R/B)
	Monitor Dimension (W x H x D)	(Head) 1,225.53 x 810.1 x 6.6 mm (Signage Box) 782.8 x 238.4 x 34.7 mm
	Weight	(Head) 13.9 kg (Signage Box) 3.4 kg
	Carton Dimensions (W x H x D)	1,329 x 898 x 191 mm
	Packed Weight	22.4 kg
KEY FEATURE		Internal Memory (64GB), Temperature Sensor, Embedded CMS, Fail Over, Content Sync, OSD Rotation, Lock Mode, Content Rotation, Gapless Playback, Tile Mode Setting, Setting Data Cloning, Firmware Update by Network, SNMP, ISM Mode, Control Manager, Crestron Connected [®] , DPM, PM Mode, Wake on LAN, SI Server Setting, webRTC
ENVIRONMENT CONDITIONS	Operation Temperature	0°C to 40°C
	Operation Humidity	10% to 80%
POWER	Power Supply	100-240V~, 50/60Hz
	Power Type	Built-In Power
	Power Consumption	Typ. 309 W *8 color bar Max. 318 W *8 color bar
CERTIFICATION	Safety	IEC 60950-1 / EN 60950-1 / UL 60950-1
	EMC	FCC Class "A" / CE / KC
MEDIA PLAYER COMPATIBILITY	ErP / Energy Star	Yes / No
	OPS Type Compatible	No
SOFTWARE COMPATIBILITY	External Media Player Attachable	Yes
	Content Management Software	SuperSign CMS
	Control and Monitoring Software	SuperSign Control / Control+
ACCESSORIES	Signage365Care	Yes
	Basic	Remote Controller, Power Cord, QSG, IR Receiver, Regulation Book, Phone to RS232C Gender, RS232 Cable (4p-4p), FFC Cables (for Connection between Panel and Signage Box), DP Cable, LAN Cable, LC (VLC Cable), Tapes, Screws, Shield Cover Assy, Rubber Dampers

- 1) Brightness may vary for final product (with glass).
- 2) Network Based Control



Download
LG C-Display+
Mobile App

Google Play Store

- www.lg.com/b2b
- www.youtube.com/c/LGCommercialDisplay
- www.facebook.com/LGInformationDisplay
- www.linkedin.com/company/LGInformationDisplay

LG may make changes to specifications and product descriptions without notice.
Copyright © 2019 LG Electronics Inc. All rights reserved. "LG Life's Good" is a registered trademark of LG Corp.
The names of products and brands mentioned here may be the trademarks of their respective owners.

