



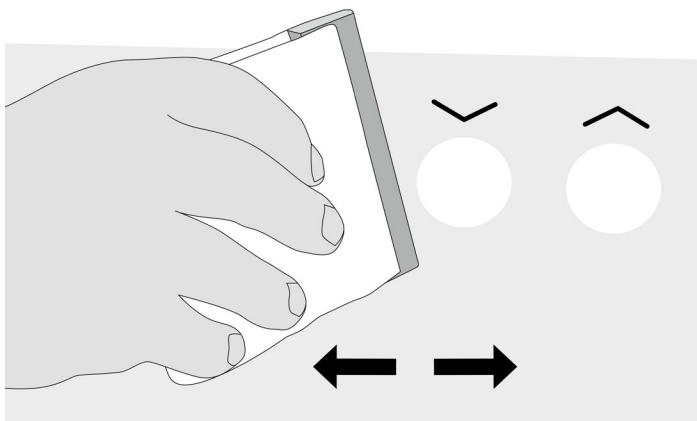
Mounted StoreFrontControl with the standard designed adhesive foil

MOUNTING INSTRUCTION StoreFrontControl

Delivery contents

Delivery includes one StoreFrontControl sensor bar (SFC), two holders with attached double-sided adhesive tape and a USB cable.

Optionally, you can use our standard designed adhesive foil with the button symbols as seen in the design above. You prefer to design your own decorative foil? We will be happy to provide a template file.

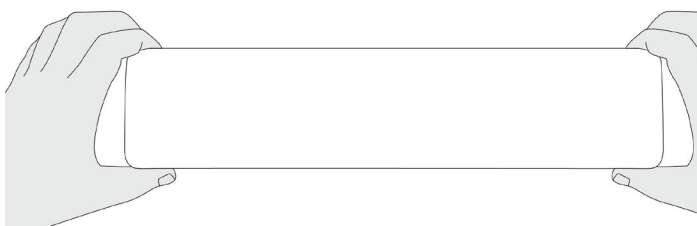


1

Cleaning the glass surface & applying the decorative foil

Clean your shop window thoroughly! The glass must be grease- and dust-free.

Then, apply your decorative foil on the cleaned glass surface. Remove any air bubbles by using a squeegee.

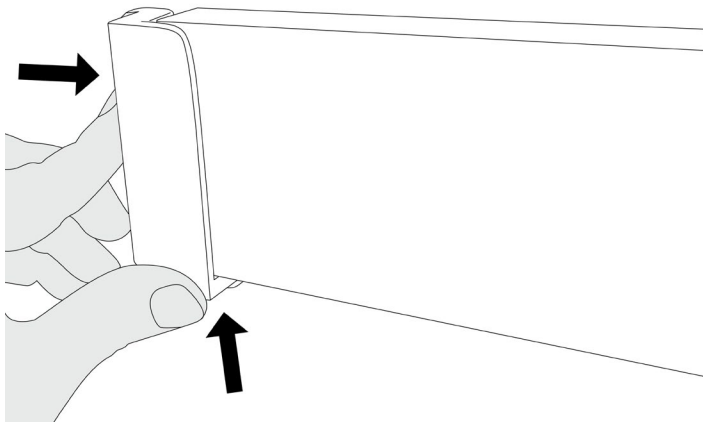


2

Position the sensor bar

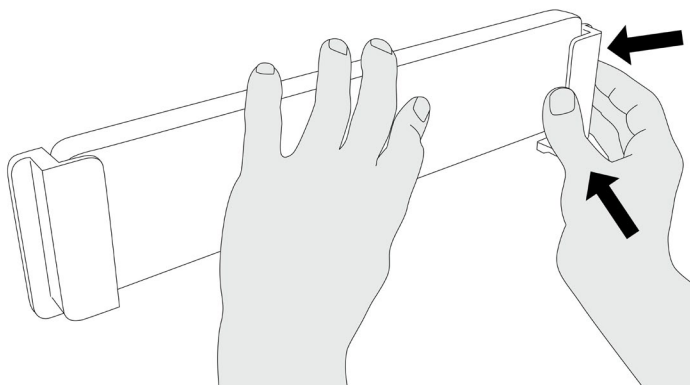
To position the bracket holders, clean the according areas of your shop window thoroughly. The pane must be free of grease and dust.

Remove the protective films from the adhesive strips of both holders. Determine the correct position of the SFC bar behind the design foil. We recommend the installation be done by two people. One person gives instructions from outside to place the sensor bar in the correct position behind the design foil. The second person inside sticks the bracket holder onto the glass.



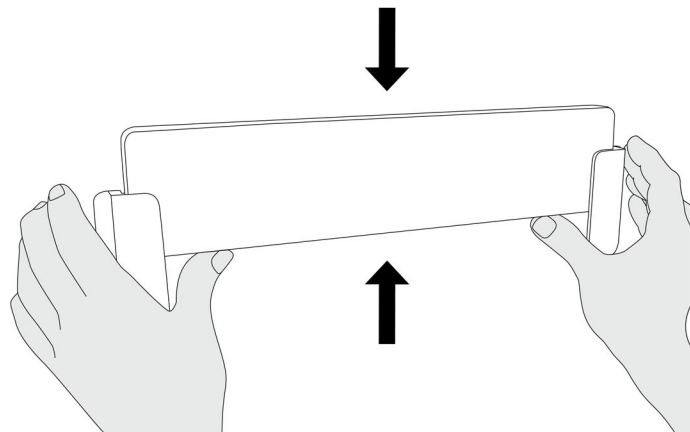
3 Attaching the first bracket

Glue the first holder onto the glass. The sensor bar will not be removed for this. Please note that the adhesive on the bracket holder is very strong, so it must be correctly positioned at the first attempt. Removing the holder, once it has been stuck to the glass, is only possible with considerable effort.



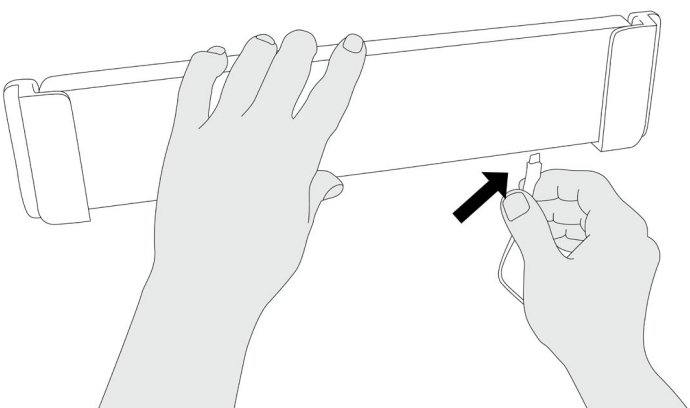
4 Attaching the second bracket

Make sure the sensor bar is still correctly positioned. Now glue the second holder to the glass.



5 Remove or inserting the sensor bar in the holder

The sensor bar can be easily inserted or removed, by pushing it either upward or downward into the holders.



6 Connect USB cable, Key assignment & sensitivity

Attach the supplied USB cable to the sensor bar and connect the other end with your PC. Wait a minute until the calibration is completed. If the automatic setting should not work, the sensitivity might have to be customized with the SFC-Control-Panel (www.interactive-displays.de/en/support).

The key assignment can also be set individually using this tool. Your StoreFrontControl is now ready for use.

Get in touch!